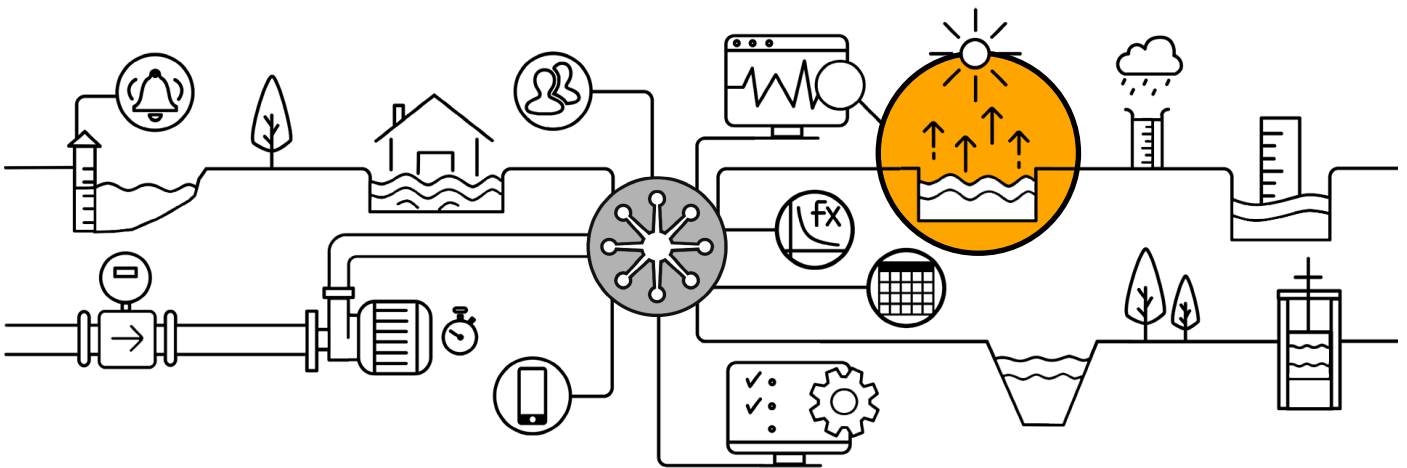


What gets measured, gets managed.

INNOVATIVE SOLUTIONS FOR COST EFFECTIVE
WATER RESOURCES MEASUREMENT, MONITORING & ALERTING

VIGI-EVAP Evaporation



VIGI-EVAP is a telemetry device that measures the changes of water level in an evaporation pans using Archimedes buoyancy rule. **VIGI-EVAP** is capable of logging, transmitting and alerting evaporation changes via SMS and GPRS.

VIGI-EVAP settings can be changed with **VIGISOFT** software via on-site as well as remote communication ports.

VIGI-EVAP can be easily installed on evaporating pan where evaporating pan exist, in other words, the evaporation pan can be easily digitized.

Data sent through **VIGI-EVAP** can be received and managed using a Client / Server software called **WaterQuey**.

Features of **VIGI-EVAP** are simplicity, low cost, low power consumption, simple calibration, easy installation.



VIGI-EVAP (Data Sheet)

Evaporation

TECHNOLOGY

Archimedes buoyancy Rule

SENSOR

Evaporation Level	Class C3, Weight sensor/ Evaporation level: Analogue, IP65, Connector cable :5×0.2 mm L300 mm, IP67
Water Level Accuracy	1 mm
Temperature Accuracy	0.5° C

EVAPORATION SENSOR ACCESSORIES

Hanging Pipe Diameter	25 mm (L250 mm)
Hanging Pipe Material	Special polymer alloy
Rope	Galvanized Steel, weight
Other Accessories	3 rings and carabineers galvanized , 4 galvanized screws 6 mm
Pan Wall mounting Holder /screw	Special part / 4× M6/ M12

RTU

Logging Memory	1000 Records (Up to 20000 Optional)
Transferring Data	GSM, GPRS, APN each one to 2 address (Preferably-combined methods)
SIM CARD Socket	Nano
GSM Antenna	Normal: 2db, Strong 5 db (Optional)
Converting Data	Converting water level data to volume in tanks, lakes, manholes & pools
Screen (Optional)	2*8 character
Trigger Key	Magnetic key for on-site reading and data transmission
Internal Battery	1×AA 3.6 VDC, Lithium 2.2Ah
Eternal Battery	8-18 VDC, Recommended: 8×AA 1.5 VDC Alkaline with battery case
Inputs / Output (Optional)	Load Cell Analog
	Input: 2×Voltage / 2×Analog 4-20mA (Accuracy 0.1% F.S.)
	Input and Output: RS485 (USB connector)
Glandes input	IP68
Data Logger Configuration Cable	Connector USB, 1 m Length, Anti Noise
Housing Material	ABS, IP66
Size	L120×W120×H110 mm Cream color with transparent door
Weight	With electronic board and battery: ~600 gr
Operation Temperature	- 20 to 65 ° C

SOFTWARE

VIGISOFT	Control / Setting
WaterQuery	Data Acquisition / Presentation / Monitoring



VIGI-EVAP (Features & Advantages)

Evaporation

Pan & RTU HOLDER

Pan Material (Optional)	Galvanized Steel, Thickness 0.7 mm
Pan Size	Cylinder shape: D1200× H250 mm
Pan Weight	~9Kg
RTU Holder Material	Steel- Color: Black electrostatic color
RTU Holder Size	L250×W140×H300 mm
RTU Holder Weight	~2.5Kg including housing & sensor

INSTALLATION

Housing	On the pan wall with one 4 mm screw
---------	-------------------------------------

OPERATION FEATURES

Easy for installation
Special pan wall-mounting part
Lightweight, compact and portable
Easy for replacement of spares
Ability to install on existing evaporation pan
No interference in radio waves to send data via GSM
No need for expensive mechanical installations
Wide range of chargeable or non-chargeable batteries, Available everywhere
No need for earthing system
No need for solar cells and controller charger
No AC power required
Low energy consumption
Battery replacement case

ADVANTAGES



Simple



Easy Calibration



Cost Effective



Stable



Easy Maintenance